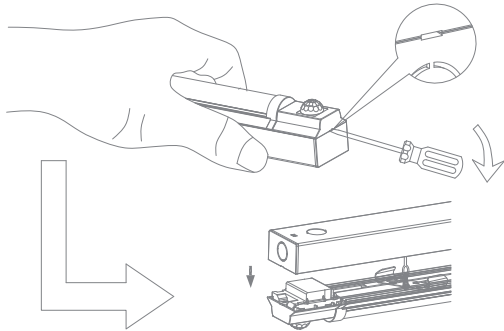
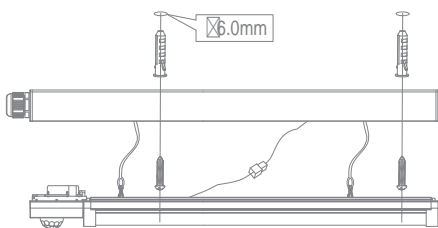


• Installation Instructions

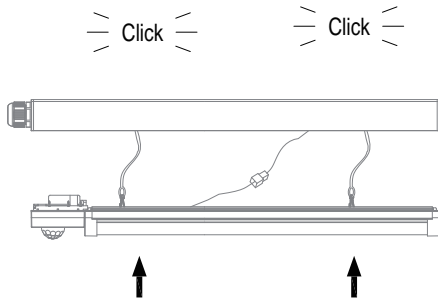
1). Open the lamps, then take out the accessories bag



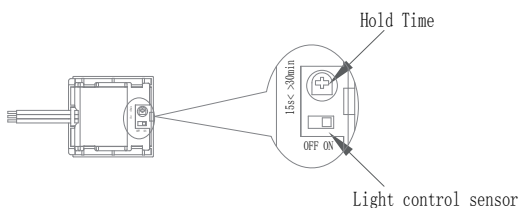
3). Fix the rear aluminium casing to the wall/ceiling



5). Assemble the lamp body on the aluminium casing.

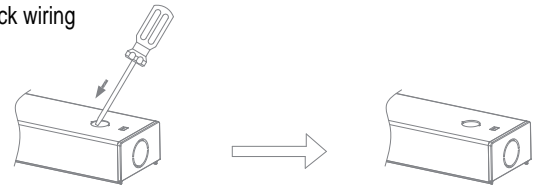


6). Sensor adjustment method

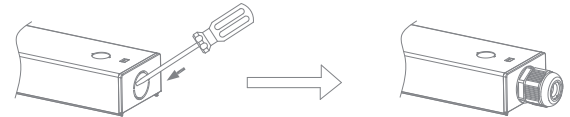


2). Pop out required entry hole, then mount the cable gland.

① Back wiring

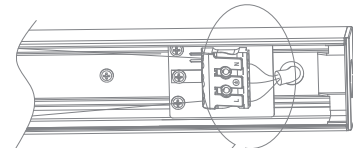


② Side wiring

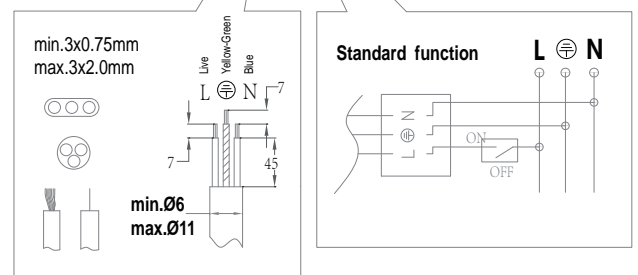
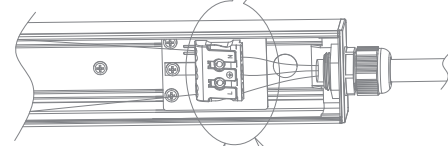


4). Connected the input wire to the terminal like below.

① Back wiring



② Side wiring



• Package

Product Type	Rated Power	Inner Box	Outer Carton	Qty/Carton	Unit N.W	G.W/Carton
600mm	10W	663 x 60 x 65mm	680 x 320 x 280mm	20Pcs	560g	13Kg
1200mm	17/32W	1263 x 60 x 65mm	1280 x 320 x 150mm	10Pcs	940g	11.9Kg
1500mm	28/56W	1563 x 60 x 65mm	1580 x 320 x 150mm	10Pcs	1120g	15.2Kg
1800mm	32/62W	1863 x 60 x 65mm	1880 x 320 x 150mm	10Pcs	1330g	18.4Kg

! CAUTION

- ※ In case of electric shock, please make sure the power is off before installation.
- ※ The lamp should be installed and operated by a qualified electrician or technician in accordance with relevant local codes.
- ※ Do not use sharp tools near or on the surface of the lamp.
- ※ Unpack and examine the product carefully. Report any damage and save all packing materials if any portion of the product was damaged during transportation.