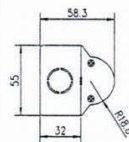
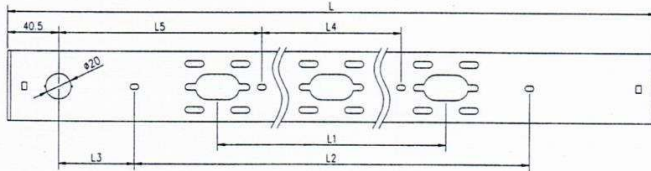


## Slim Batten Installation guide

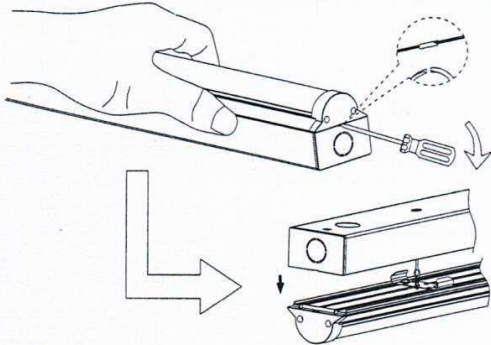
### 1. Product Size



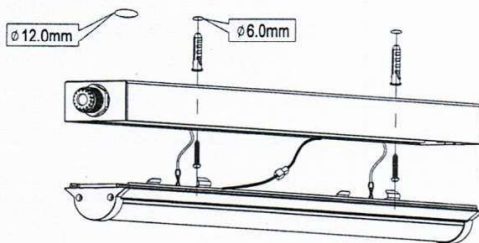
Type	Size L	Size L1	Size L2	Size L3	Size L4	Size L5
2FT	600mm		340mm	89.5mm		
4FT	1200mm	610mm	800mm	159.5mm		
5FT-30W	1500mm	610mm	840mm	289.5mm		
5FT-55W	1500mm	610mm			540mm	439.5mm
6FT-32W	1800mm	610mm	1140mm	289.5mm		
6FT-62W	1800mm	610mm	1320mm	199.5mm		

### 2. Surface mounting procedure:

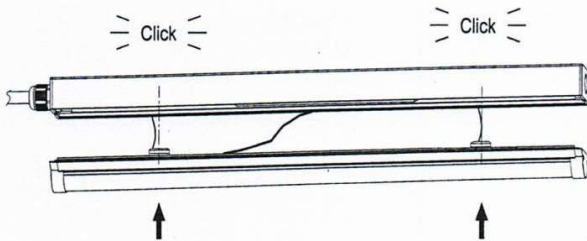
1). Open the lamps, then take out the accessories bag.



3). Fix the rear aluminium casing to the wall/ceiling.

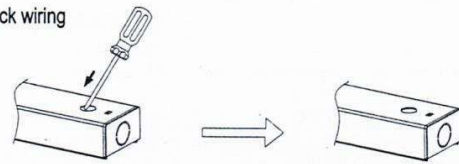


5). Assemble the lamp body on the aluminium casing.

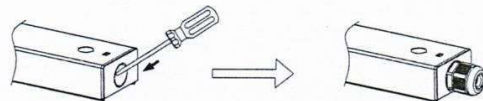


2). Pop out required entry hole, then mount the cable gland.

① Back wiring

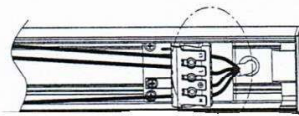


② Side wiring

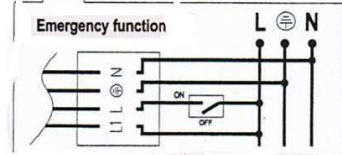
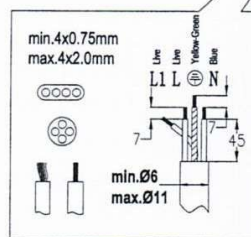
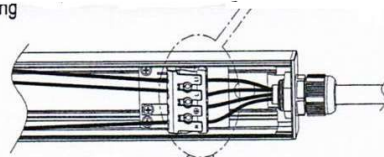


4). Connected the input wire to the terminal like below.

① Back wiring

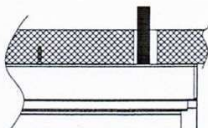


② Side wiring

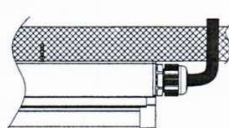


### 3. Connection type

1). Back wiring



2). Side wiring



### 4. Parts included:

